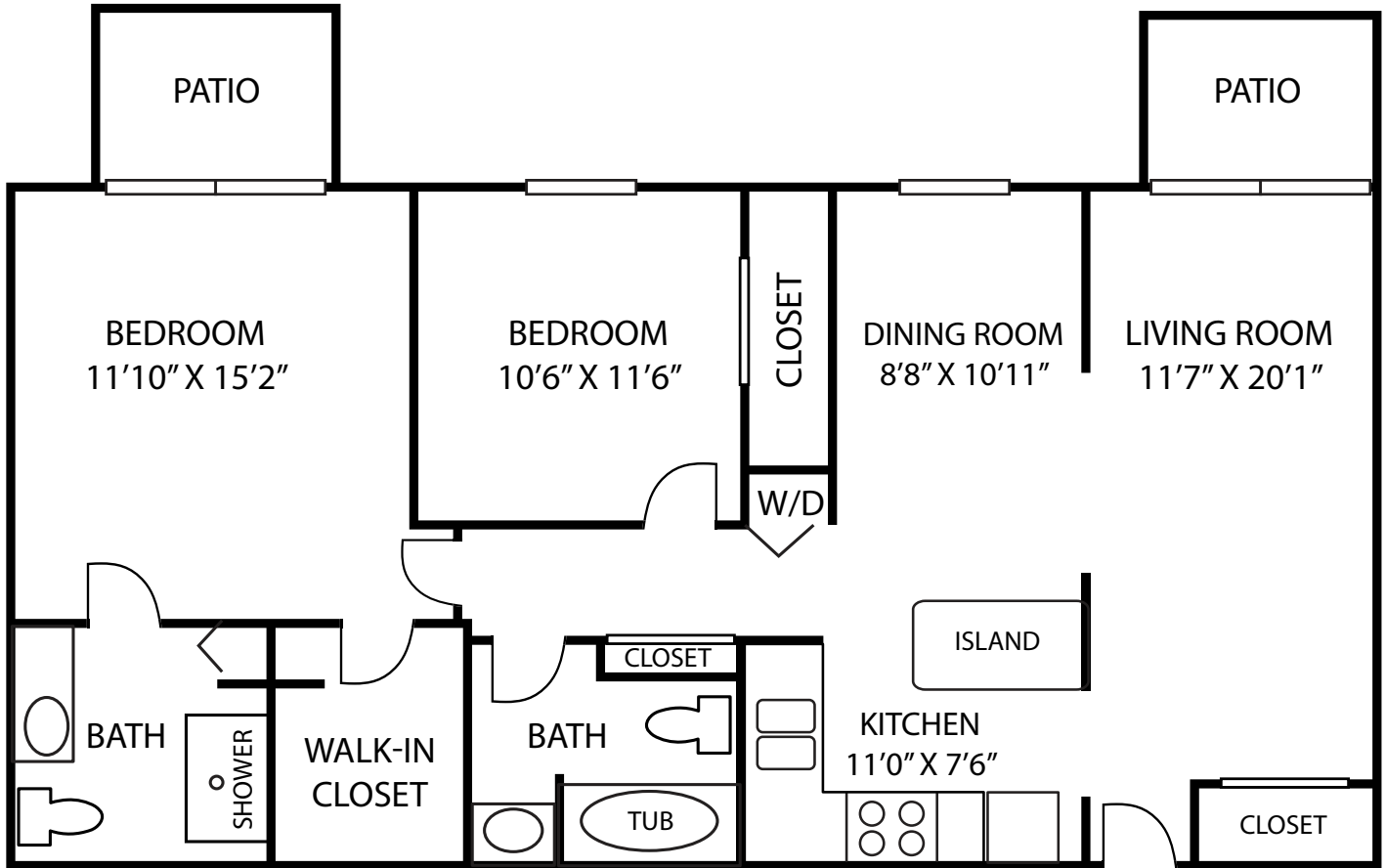




INDEPENDENT LIVING

Floor Plan

Wentworth



Wentworth

- Garden Terrace
- Two Bedrooms
- 1,080 square feet

2024 (G2BB)



LUTHER MANOR
A Life Plan Community

Wauwatosa
414.464.3880 | live@luthermanor.org | luthermanor.org



Wentworth - Garden Terrace Two Bedrooms

Entrance Options	Entrance Fee	Monthly Fee One Person	Monthly Fee Two People
90% Refundable Entrance Fee	\$208,200	\$2,671-2,805	\$3,200-3,334
Declining Balance Entrance Fee	\$107,500	\$2,671-2,805	\$3,200-3,334
Rental		\$3,416-3,587	\$3,945-4,116

The Entrance Fee includes priority access to the full continuum of care at Luther Manor.

Amenities

Included with monthly fees are:

- \$276 dining credit per resident
- All utilities including basic cable (excludes phone)
- Wide range of Life Enrichment activities
- Outdoor parking

Indoor parking is available for an additional fee.

For apartments with a fountain view, golf course view, gazebo view, or proximity to dining, add 5%.
The charge for a second person is \$529 per month along with an additional \$10,000 entrance fee.

Notes:
