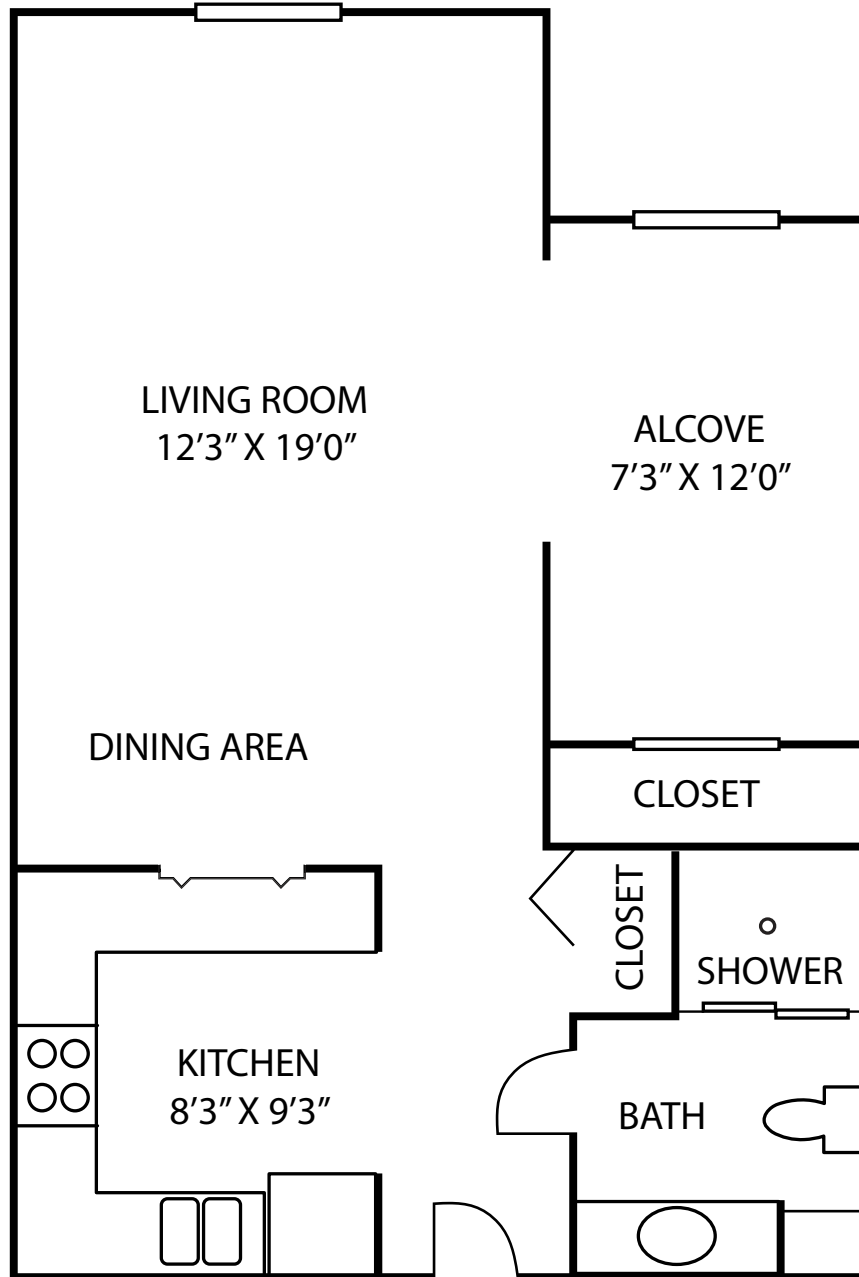




INDEPENDENT LIVING

Floor Plan

Evanston



Evanston

- Park Terrace
- Studio
- 550 square feet

2024 (PS)



LUTHER MANOR
A Life Plan Community

Wauwatosa
414.464.3880 | live@luthermanor.org | luthermanor.org



Evanston - Park Terrace Studio

Entrance Options	Entrance Fee	Monthly Fee One Person
90% Refundable Entrance Fee	\$107,500	\$1,574-1,653
Declining Balance Entrance Fee	\$60,100	\$1,574-1,653
Rental		\$1,994-2,094

The Entrance Fee includes priority access to the full continuum of care at Luther Manor.

Amenities

Included with monthly fees are:

- \$276 dining credit
- All utilities including basic cable (excludes phone)
- Wide range of Life Enrichment activities
- Outdoor parking

Indoor parking is available for an additional fee.

For apartments with a fountain view, golf course view, gazebo view, or proximity to dining, add 5%.

Notes:
