

## Luther Manor Continuing Precautions Related to COVID-19

May 5, 2021 5:56 pm

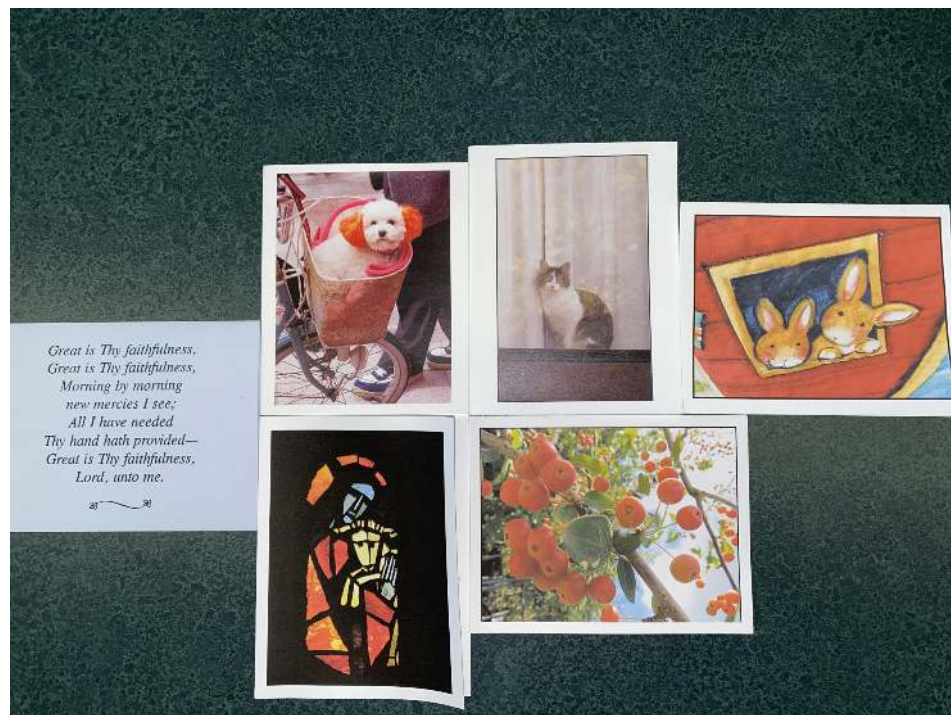
The safety of our residents and staff remain our top priority and we will continue with our protocols, precautions and daily screening of staff and all Health Care Center and Assisted Living residents.

Visitor protocols and regulations continue to evolve, so please read on and stay tuned for the very latest.

Thank you for your support, partnerships and commitment to our residents and staff as the pandemic continues to evolve. Our Sharing God's Love team has been instrumental and is here to help you share encouragement with residents and our staff. Just email [SharingGodsLove@LutherManor.org](mailto:SharingGodsLove@LutherManor.org) to get started. If you have any questions please let us know.

### Sharing God's Love

- **Thank you, Marie Ellingson from Portland, OR** for the beautiful homemade cards, encouragement and truly sharing God's love! You should be a professional card maker!



### Campus Update

- For anyone taking a loved one out for Mother's Day, we have changed our process so that you can now escort your loved one back to his or her apartment to say goodbye. You will need to screen in and print a visitor name badge at an



# LUTHER MANOR

A Life Plan Community

approved entrance before doing so. Thank you for your continued support and partnership on your loved one's care and well-being!

## Campus Happenings

- Happy Cinco de Mayo! Our residents got a full dose of a little holiday cheer, including all sorts of Mexican travel shows and music programming on Luther Manor TV (our in-house TV Channel). They also received a hearty Tortilla Soup as the starter for dinner tonight along with enchiladas. Don't worry, if your loved one is not a fan of Mexican food we always offer alternatives!

Oh, and belated, May the Fourth be with you Day :)



## Interested in hearing more from us?

- Subscribe to receive email updates at [COVIDUpdates@LutherManor.org](mailto:COVIDUpdates@LutherManor.org)
- Visit our website at [www.luthermanor.org](http://www.luthermanor.org)
- Follow us on Facebook at [LutherManorWI](https://www.facebook.com/LutherManorWI)