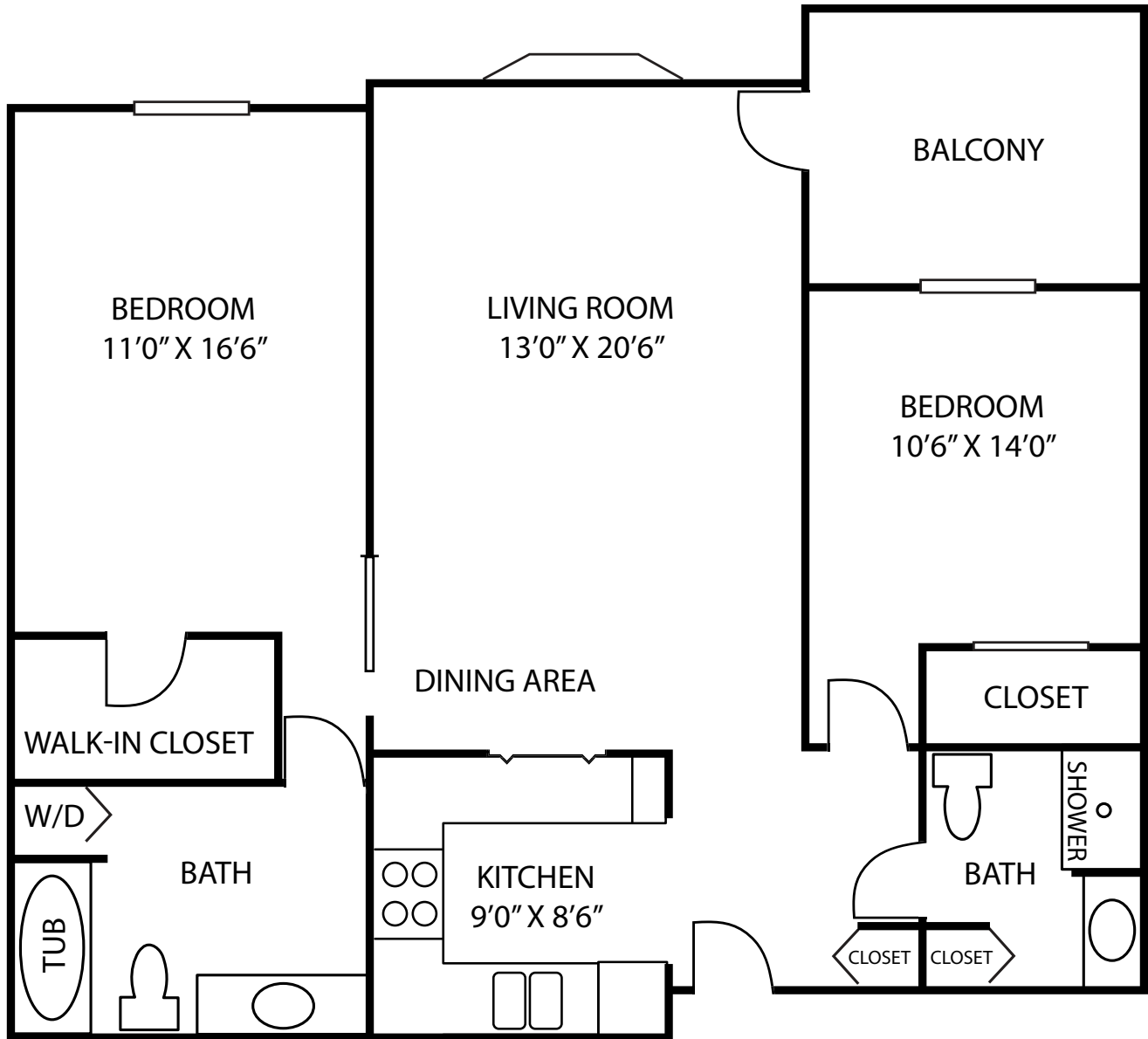




INDEPENDENT LIVING

Floor Plan

Wilshire



Wilshire

- Park Terrace
- Two Bedrooms
- 1,000 square feet

2020 P2BA



LUTHER MANOR
A Life Plan Community

Wauwatosa and Mequon
414.464.3880 | live@luthermanor.org | luthermanor.org



Wilshire - Park Terrace Two Bedrooms

	Entrance Fee	Monthly Fee One Person	Monthly Fee Two People
90% Refundable Entrance Fee	\$149,900	\$2,299-2,414	\$2,749-2,886
Non-Refundable Entrance Fee	\$84,900	\$2,299-2,414	\$2,749-2,886
Without Entrance Fee		\$3,999-4,199	\$4,449-4,649

The Entrance Fee includes priority access to the full continuum of care at Luther Manor.

Amenities

Included with monthly fees are:

- \$239 dining credit per resident
- All utilities including basic cable (excludes phone)
- Wide range of Life Enrichment activities
- Outdoor parking

Indoor parking is available for an additional fee.

For apartments with a fountain view, golf course view, gazebo view, or proximity to dining, add 5%.

The additional charge for a second person is \$450 per month.

Notes:
