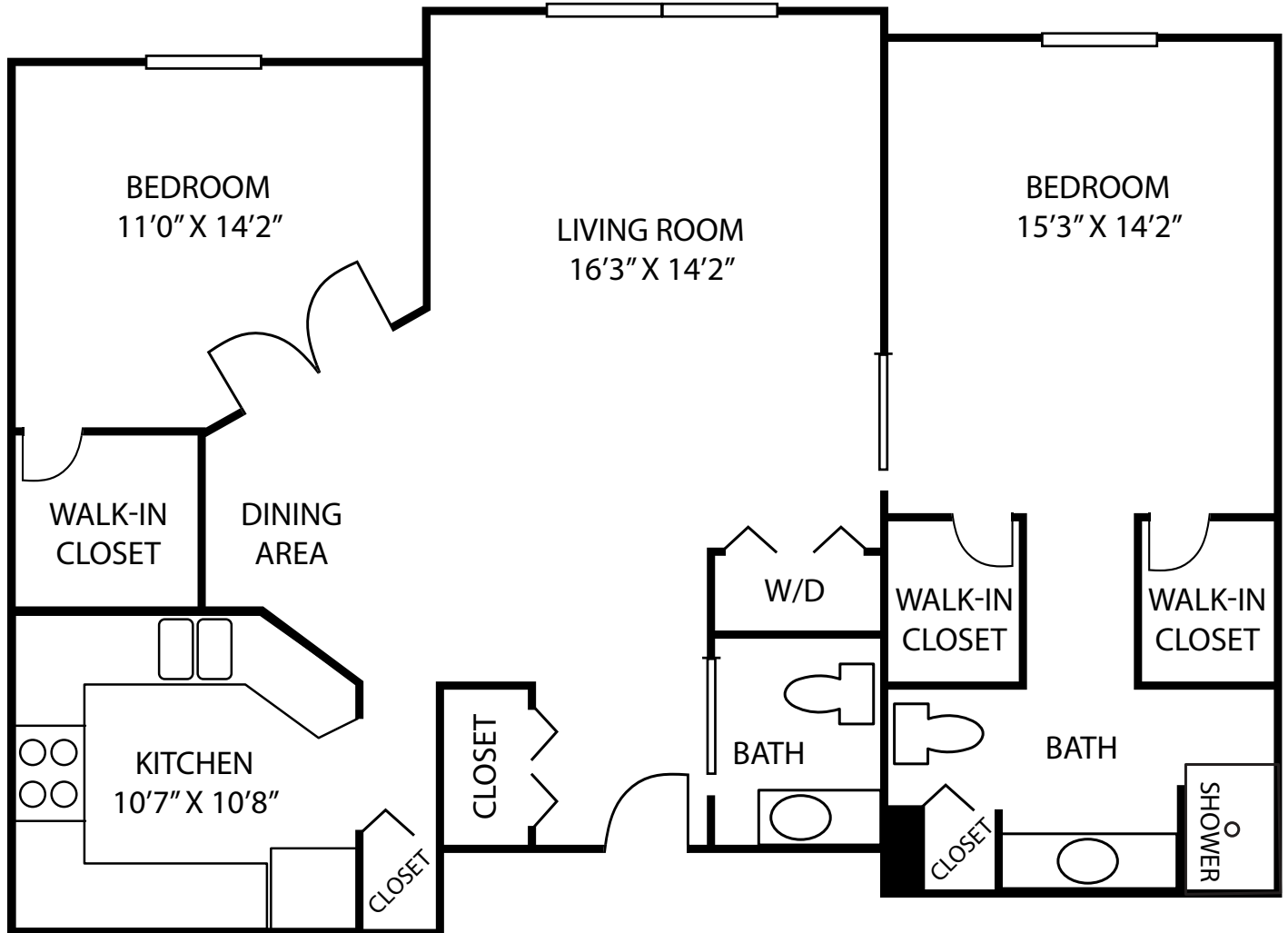




# INDEPENDENT LIVING


Floor Plan

*Woodfield*



## Woodfield

- Garden Terrace
- Two Bedrooms
- 1,110 square feet

2020 



**LUTHER MANOR**  
A Life Plan Community

Wauwatosa and Mequon  
414.464.3880 | [live@luthermanor.org](mailto:live@luthermanor.org) | [luthermanor.org](http://luthermanor.org)



## Woodfield - Garden Terrace Two Bedrooms

|                             | Entrance Fee | Monthly Fee One Person | Monthly Fee Two People |
|-----------------------------|--------------|------------------------|------------------------|
| 90% Refundable Entrance Fee | \$174,900    | \$2,399-2,519          | \$2,849-2,991          |
| Non-Refundable Entrance Fee | \$79,900     | \$2,399-2,519          | \$2,849-2,991          |
| Without Entrance Fee        |              | \$3,199-3,359          | \$3,649-3,809          |

*The Entrance Fee includes priority access to the full continuum of care at Luther Manor.*

## Amenities

Included with monthly fees are:

- \$239 dining credit per resident
- All utilities including basic cable (excludes phone)
- Wide range of Life Enrichment activities
- Outdoor parking

Indoor parking is available for an additional fee.

For apartments with a fountain view, golf course view, gazebo view, or proximity to dining, add 5%.

The additional charge for a second person is \$450 per month.

## Notes:

---



---



---



---



---



---

