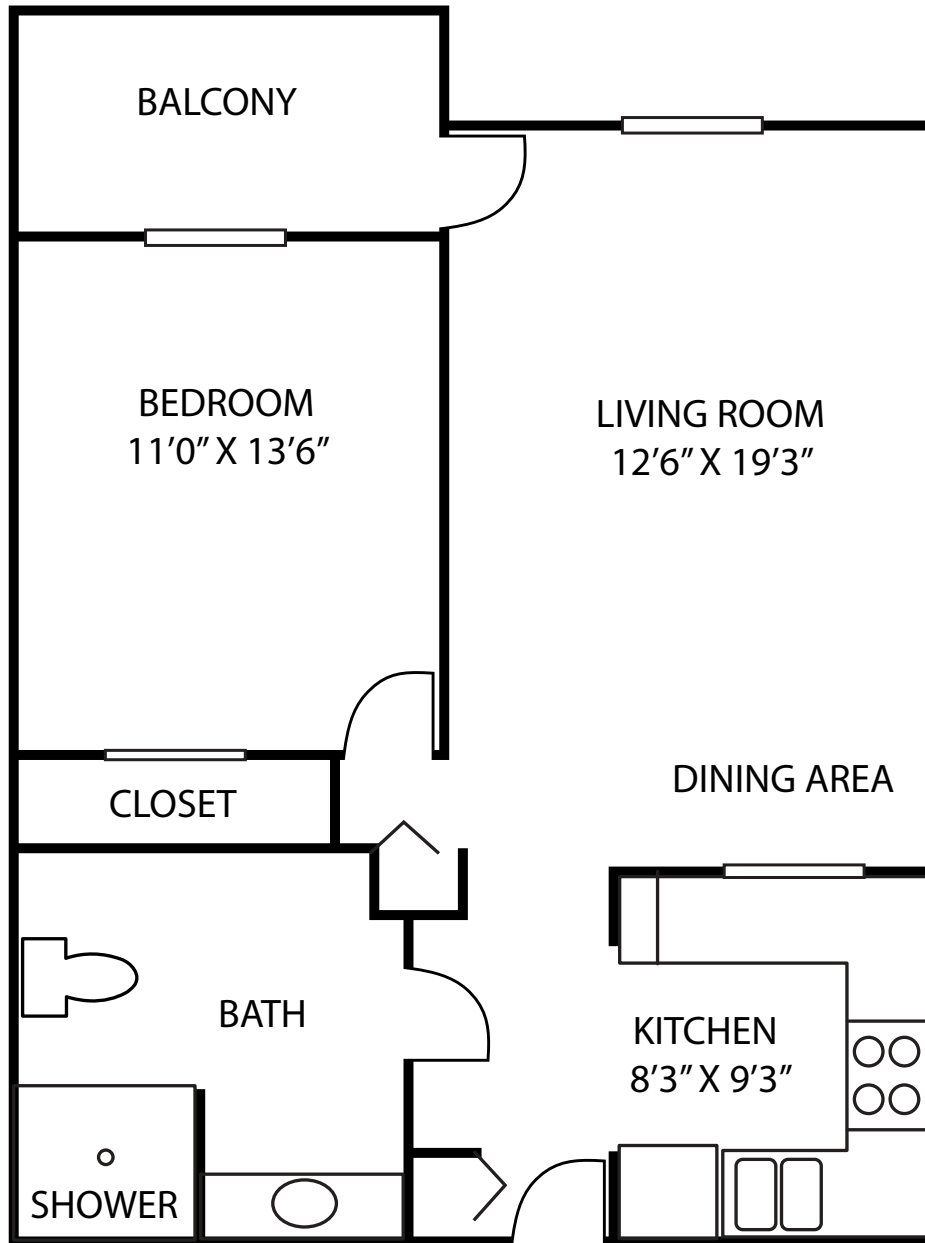




# INDEPENDENT LIVING

Floor Plan

*Hampton*



## Hampton

- Park Terrace
- One Bedroom
- 700 square feet

2020 (PIB)



**LUTHER MANOR**  
A Life Plan Community

Wauwatosa and Mequon  
414.464.3880 | live@luthermanor.org | luthermanor.org



## Hampton - Park Terrace One Bedroom

	Entrance Fee	Monthly Fee One Person	Monthly Fee Two People
90% Refundable Entrance Fee	\$109,900	\$1,899-1,994	\$2,349-2,466
Non-Refundable Entrance Fee	\$59,900	\$1,899-1,994	\$2,349-2,466
Without Entrance Fee		\$2,599-2,729	\$3,049-3,179

*The Entrance Fee includes priority access to the full continuum of care at Luther Manor.*

## Amenities

Included with monthly fees are:

- \$239 dining credit per resident
- All utilities including basic cable (excludes phone)
- Wide range of Life Enrichment activities
- Outdoor parking

Indoor parking is available for an additional fee.

For apartments with a fountain view, golf course view, gazebo view, or proximity to dining, add 5%.

The additional charge for a second person is \$450 per month.

## Notes:

---



---



---



---



---



---