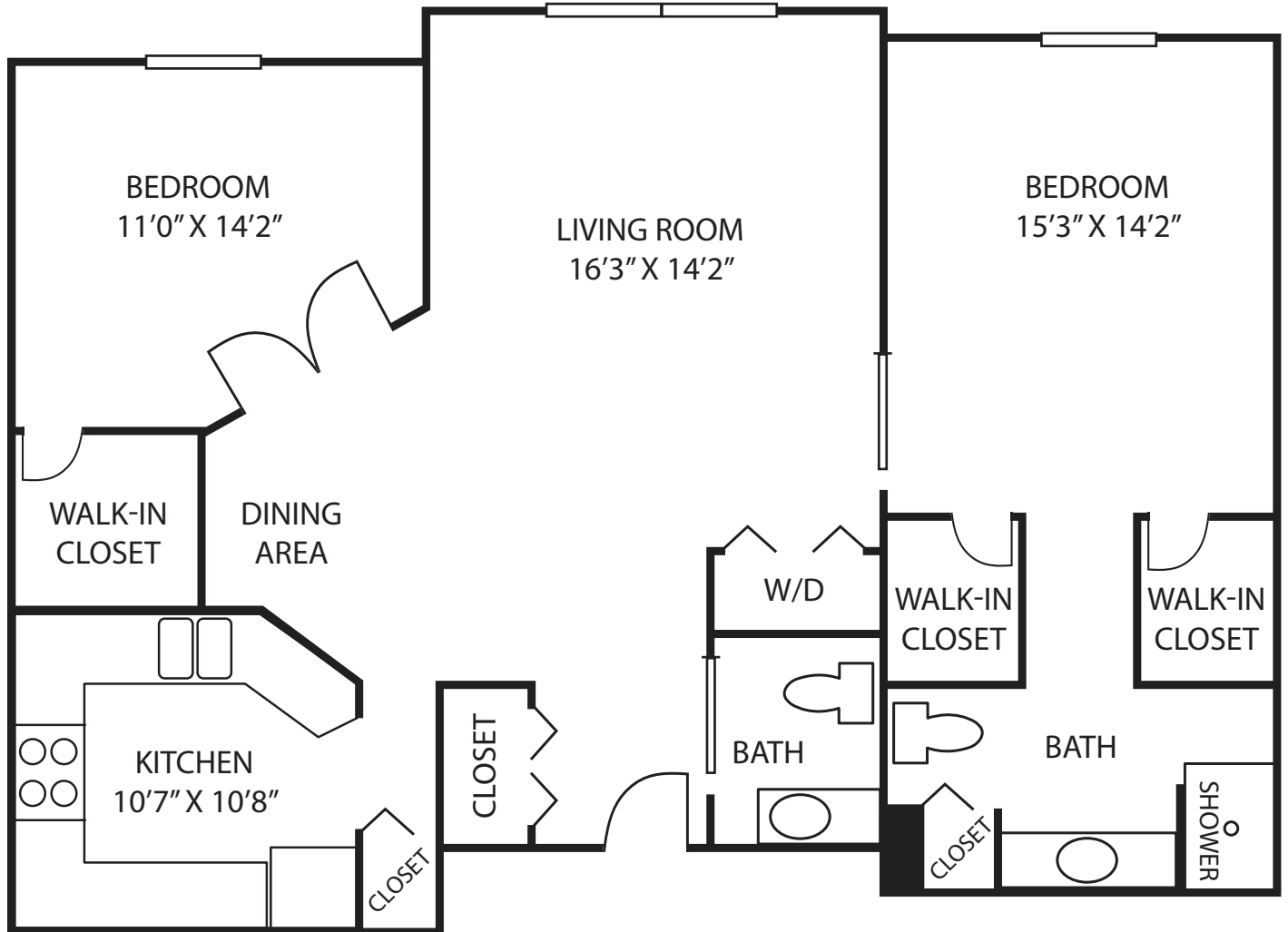




# INDEPENDENT LIVING

Floor Plan

*Woodfield*



## Woodfield

- Garden Terrace
- Two Bedrooms
- 1,110 square feet

2019 



**LUTHER MANOR**  
A Life Plan Community

Wauwatosa and Mequon  
414.464.3880 | [live@luthermanor.org](mailto:live@luthermanor.org) | [luthermanor.org](http://luthermanor.org)



## Woodfield - Garden Terrace Two Bedrooms

	Entrance Fee	Monthly Fee One Person	Monthly Fee Two People
90% Refundable Entrance Fee	\$160,900	\$2,732	\$3,172
Non-Refundable Entrance Fee	\$59,000	\$2,732	\$3,172
Without Entrance Fee		\$3,846	\$4,326

*The Entrance Fee includes priority access to the full continuum of care at Luther Manor.*

## Amenities

Included with monthly fees are:

- \$234 dining credit per resident
- All utilities including basic cable (excludes phone)
- Wide range of Life Enrichment activities
- Outdoor parking

Indoor parking is available for an additional fee.

For apartments with a fountain view, add 10%. For apartments with golf course view, gazebo view, or proximity to dining, add 5%.

The additional charge for a second person is \$440 per month.

## Notes:

---



---



---



---



---



---

